

PATCHWORK

COMPANY GENERAL PRESENTATION

Minsk, Belarus, 2019



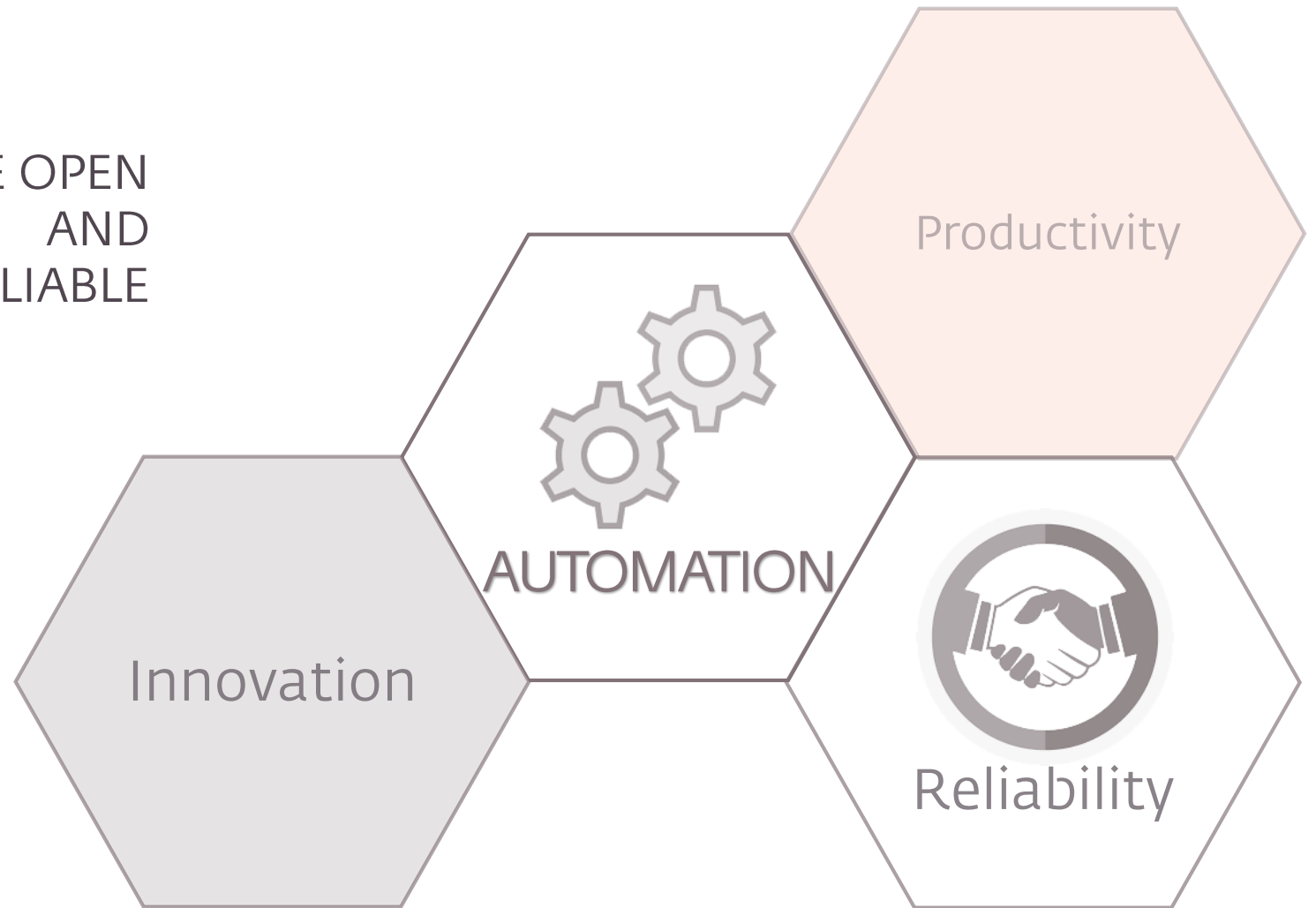
ABOUT US

WE DESIGN SMART CABLING
CONNECTIVITY SOLUTIONS TO
SUPPORT GROWING DATA AND NEEDS
TO STAY ALWAYS CONNECTED



OUR GOAL

AS A YOUNG COMPANY WE ARE OPEN FOR ANY NEW EXPERIENCE AND LOOKING FOR LONG TERM RELIABLE PARTNERSHIPS.



OUR MISSION & VISION

OUR MISSION – to create the Local Cabling Brand on a European level.

We see ourselves as a trusted adviser for our customers and an expert in development and designing of cabling infrastructures.

To create the atmosphere of engagement of each employee through the Leadership and spirit of Entrepreneurship and Innovation



OUR VALUES



CUSTOMERS

Our customers perceive us as a trusted and strategic adviser to address their challenges in Enterprise and DC environments.



ETHICS AND LEGAL

We are committed to conduct our business on a legal basis and ethically.



PARTNERS

We align our products and solutions with our Partner eco-systems



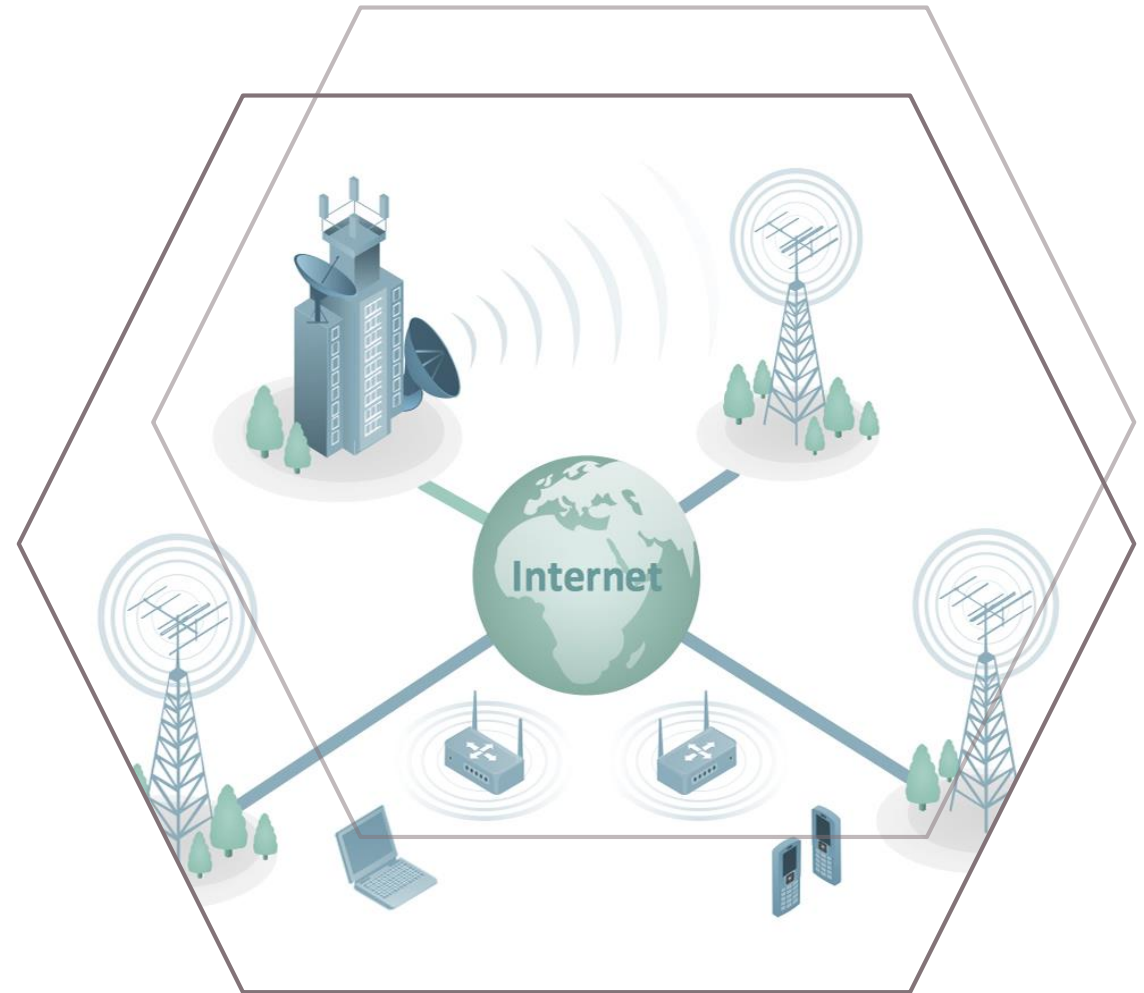
TALENTS

We focus on talents who are passionate about building solutions for the future networks

OUR SOLUTIONS



ENTERPRISE NETWORKS SOLUTIONS



MOBILITY SOLUTIONS

ENTERPRISE NETWORKS SOLUTIONS

We provide 25 years system warranty to the end customers for cabling systems installed by our Authorized Business Partners.

- ▶ TWISTED PAIR SOLUTIONS CAT. 5E/6/6A/7A/8
- ▶ MPO/MTP™ (8/12/24) PRETERMINATED FIBER-OPTIC SOLUTIONS
- ▶ HIGH DENSITY OPTICAL DISTRIBUTION FRAMES
- ▶ IN RACK AND "ZERO-SPACE" CABLE MANAGEMENT SOLUTIONS



ENTERPRISE NETWORKS SOLUTIONS

Copper and Fiber PATCHWORK™ Cabling Systems are designed for reliable infrastructure of modern government, commercial buildings and data centers.

Our high speed solutions provide smooth migration for future network applications.

- ▶ OFFICE NETWORKS
- ▶ DATA CENTERS



OFFICE NETWORKS



DATA CENTERS

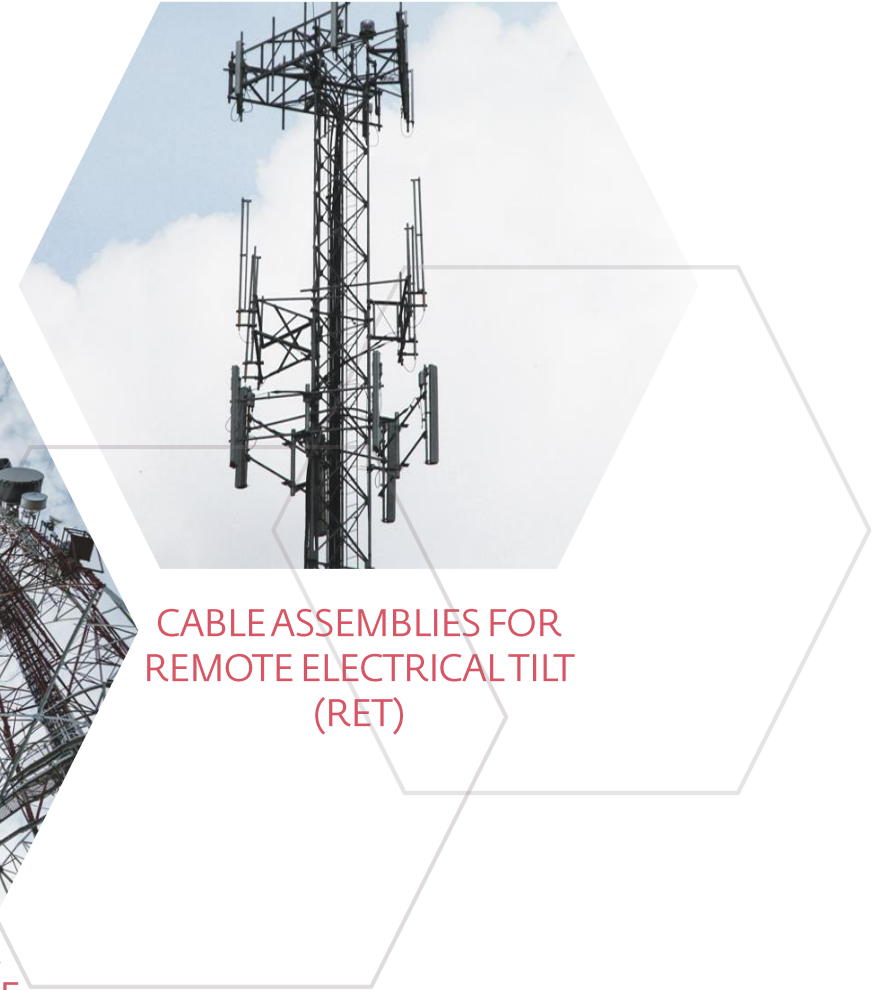
MOBILITY SOLUTIONS

Patchwork manufactures high quality fiber-optic and twisted pair cable assemblies to connect remote radio modules to main backhaul units. Assemblies have extended temperature range and UV Protection.

- ▶ CABLE ASSEMBLIES FOR RADIO INFRASTRUCTURE OF MOBILE OPERATORS
- ▶ CABLE ASSEMBLIES FOR REMOTE ELECTRICAL TILT (RET)

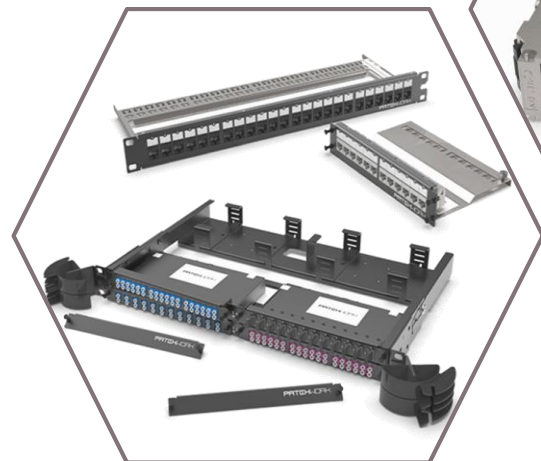


CABLE ASSEMBLIES FOR
RADIO INFRASTRUCTURE
OF MOBILE OPERATORS



CABLE ASSEMBLIES FOR
REMOTE ELECTRICAL TILT
(RET)

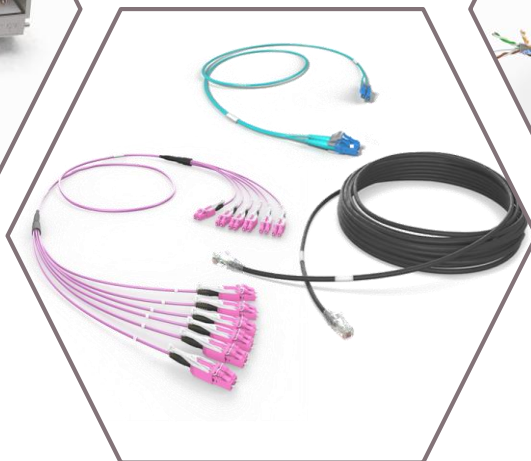
PRODUCTS



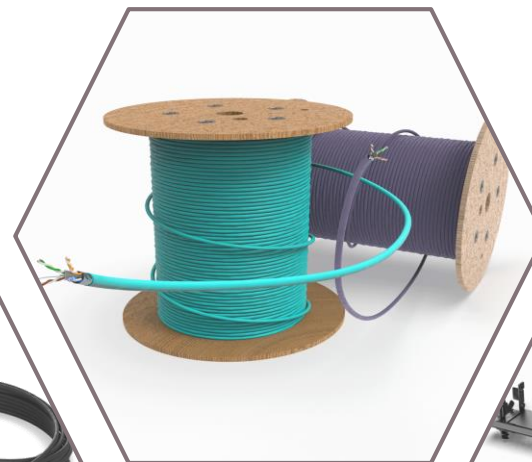
FRAMES, PANELS,
CASSETTES



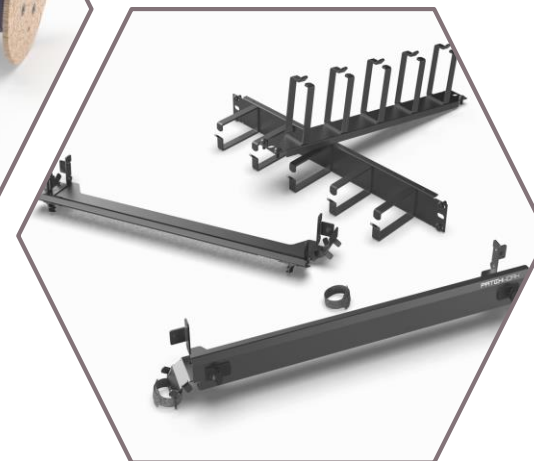
CONNECTORS



CABLE ASSEMBLIES



CABLES



CABLE
MANAGEMENT

CONTACT US

Sharangovicha st. 19, 704B
Minsk, Belarus

info@patchwork.net.ru
www.patchwork.net.ru