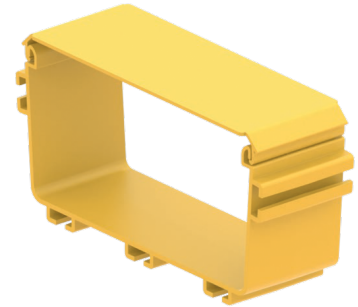


TRUNCUS Accessory to Accessory Coupler

Accessory to Accessory Coupler

Accessory coupler is used to connect accessories together
 The coupler is inserted into the slots of the connecting accessories, and the clamping levers are pressed down to secure the connection



SPECIFICATION

Connection Type	Accessory to Accessory Assembly
Size	100, 200, 300
Material	PC/ABS FR
Compliance	IEC 61249-2-21, RoHS, UL 94V-0

Part Numbers

321100401	Truncus - 100mm Accessory to Accessory Coupler, yellow
321200401	Truncus - 200mm Accessory to Accessory Coupler, yellow
321300401	Truncus - 300mm Accessory to Accessory Coupler, yellow
321100402	Truncus - 100mm Accessory to Accessory Coupler, black
321200402	Truncus - 200mm Accessory to Accessory Coupler, black
321300402	Truncus - 300mm Accessory to Accessory Coupler, black