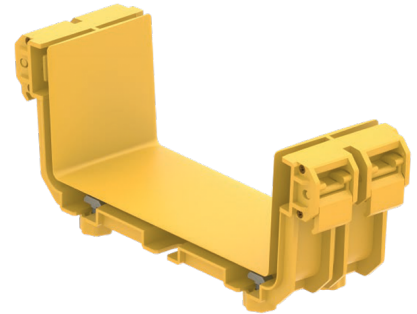


TRUNCUS Tray to Tray Coupler

Channel to Channel Coupler

Channel couplers are used to connect channels together
The channels fit into the slots on each side of the coupler, and the clamping levers are then pressed down to secure the connection



SPECIFICATION

Connection Type	Channel to Channel Assembly
Size	100, 200, 300
Material	PC/ABS FR
Compliance	IEC 61249-2-21, RoHS, UL 94V-0

Part Numbers

321100201	Truncus - 100mm Channel to Channel Coupler, yellow
321200201	Truncus - 200mm Channel to Channel Coupler, yellow
321300201	Truncus - 300mm Channel to Channel Coupler, yellow
321100202	Truncus - 100mm Channel to Channel Coupler, black
321200202	Truncus - 200mm Channel to Channel Coupler, black
321300202	Truncus - 300mm Channel to Channel Coupler, black