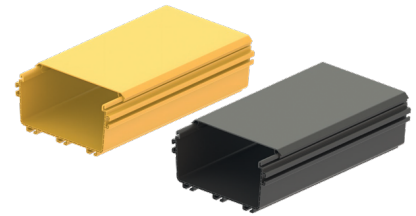


## TRUNCUS Fiber Tray 200x100 mm

### 200mm Straight Solid Channel Body and Cover

The base component for building cable paths for laying fiber optic cables and patch cords

The tray body and cover must be ordered separately



#### SPECIFICATION

Dimensions	200x100x1800 mm
Material	PC/ABS FR
Compliance	IEC 61249-2-21, RoHS, UL 94V-0

#### Part Numbers

321200111	Truncus - 200mm Straight Solid Channel Body_1.8m, yellow
321200121	Truncus - 200mm Straight Solid Channel Cover_1.8m, yellow
321200112	Truncus - 200mm Straight Solid Channel Body_1.8m, black
321200122	Truncus - 200mm Straight Solid Channel Cover_1.8m, black