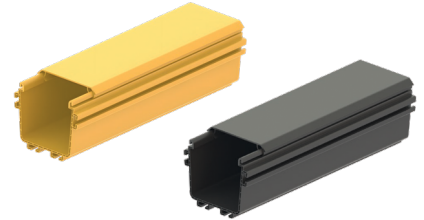


TRUNCUS Fiber Tray 100x100 mm

100mm Straight Solid Channel Body and Cover

The base component for building cable paths for laying fiber optic cables and patch cords

The tray body and cover must be ordered separately



SPECIFICATION

Dimensions	100x100x1800 mm
Material	PC/ABS FR
Compliance	IEC 61249-2-21, RoHS, UL 94V-0

Part Numbers

32110011	Truncus - 100mm Straight Solid Channel Body_1.8m, yellow
32110012	Truncus - 100mm Straight Solid Channel Cover_1.8m, yellow
32110011	Truncus - 100mm Straight Solid Channel Body_1.8m, black
32110012	Truncus - 100mm Straight Solid Channel Cover_1.8m, black