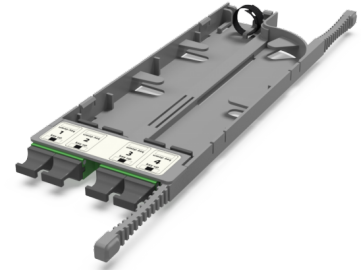


CA6 - Adapter cassette SM

CA6 - Adapter cassette 4 x MTP(16) adapters (green), SM, TIA type A (opposed key)



SPECIFICATION

Fiber type	SM 9/125 OS2
Ports quantity	4 ports
Type of interface, front end	MTP(16) adapter (Opposed key)
Material	Engineering Plastic
Product Series	CA6 - Adapter cassette Currant
Cassette/plate polarity	TIA type A
Configuration	Singlemode

Part Numbers

30226007	CA6 - Adapter cassette 4 x MTP(16) adapters (green), SM, TIA type A (opposed key)
----------	---