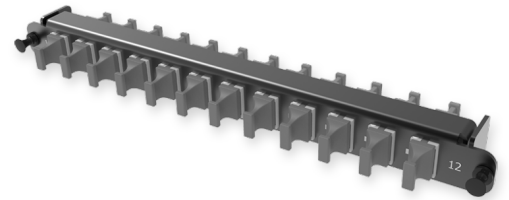


A2 - Adapter plate MM

A2 - Adapter plate 12 x MTP adapters (gray), MM, type BX (Up&Up), (supports sliding Flex Tray)



SPECIFICATION

Fiber type	MM 50/125 OM4
Ports quantity	12 ports
Type of interface, front end	MTP adapter (Aligned key)
Material	Metal
Product Series	A2 - Adapter Plate
Cassette/plate polarity	Type BX (Up&Up)
Configuration	Multimode

Part Numbers

18214104	A2 - Adapter plate 12 x MTP adapters (gray), MM, type BX (Up&Up), (supports sliding Flex Tray)
----------	--